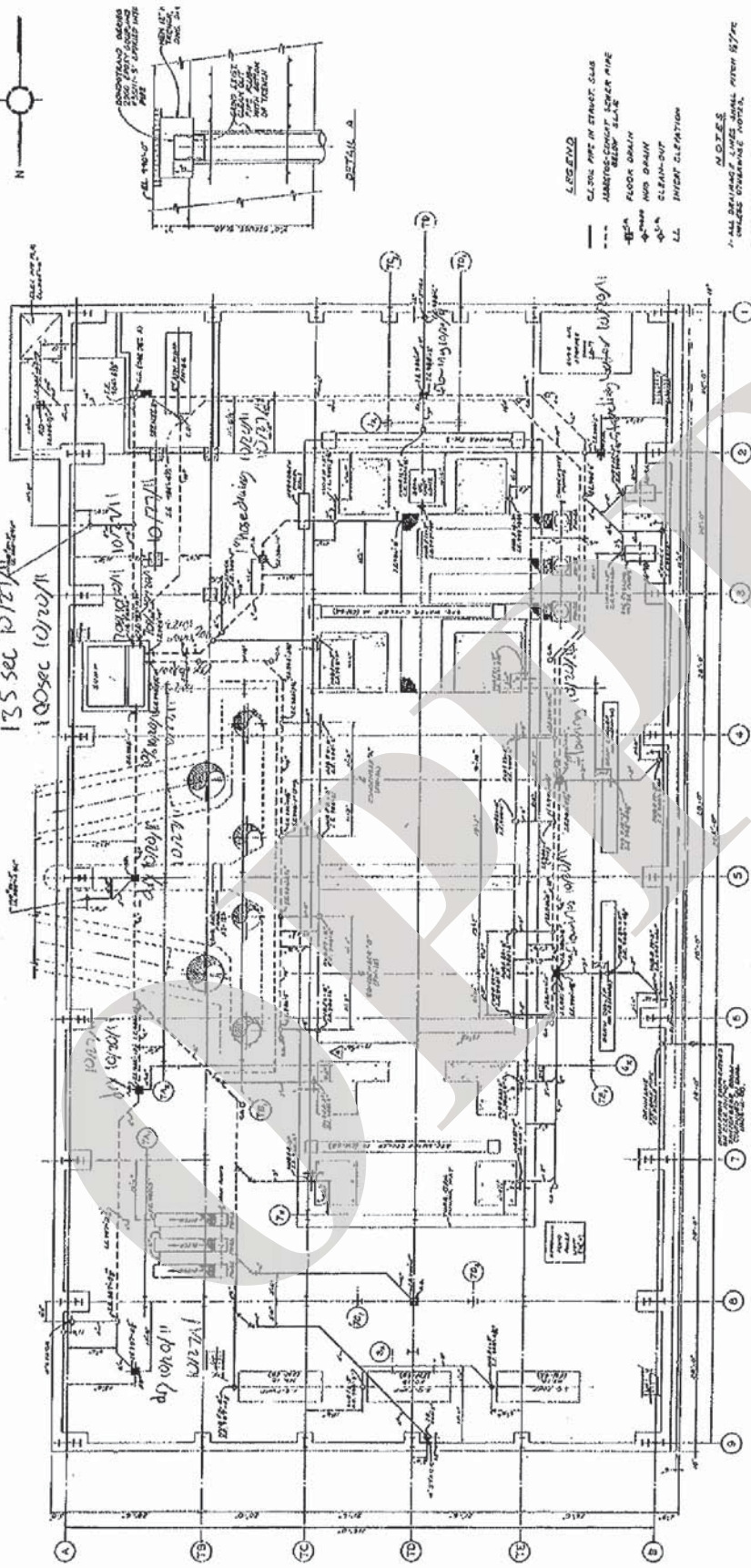


OPPD

Security-Related and/or Personal Information Redacted

Security-Related and/or Personal Information Redacted
135 SEC 10/20/11
100sec 10/20/11

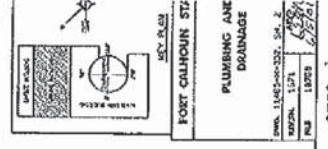


BASEMENT FLOOR PLAN EL. 980'-0"

- LEGEND
- CLONE PIPE IN STAINL. CLAS
 - ARMORED CONDUIT UNDER PIPE
 - FLOOR DRAIN
 - WASH DRAIN
 - CLEAN-OUT
 - INVERT ELEVATION

NOTES

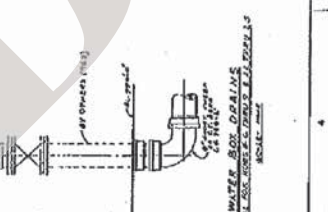
1. ALL DRAINAGE LINES SHALL BE 1/2" MIN. CLEARANCE FROM WALLS UNLESS OTHERWISE NOTED.
2. ALL PIPING IN CONDUIT SHALL BE 1/2" MIN. CLEARANCE FROM WALLS UNLESS OTHERWISE NOTED.
3. ALL PIPING SHALL BE 1/2" MIN. CLEARANCE FROM WALLS UNLESS OTHERWISE NOTED.
4. ALL PIPING SHALL BE 1/2" MIN. CLEARANCE FROM WALLS UNLESS OTHERWISE NOTED.
5. ALL PIPING SHALL BE 1/2" MIN. CLEARANCE FROM WALLS UNLESS OTHERWISE NOTED.
6. ALL PIPING SHALL BE 1/2" MIN. CLEARANCE FROM WALLS UNLESS OTHERWISE NOTED.
7. ALL PIPING SHALL BE 1/2" MIN. CLEARANCE FROM WALLS UNLESS OTHERWISE NOTED.
8. ALL PIPING SHALL BE 1/2" MIN. CLEARANCE FROM WALLS UNLESS OTHERWISE NOTED.
9. ALL PIPING SHALL BE 1/2" MIN. CLEARANCE FROM WALLS UNLESS OTHERWISE NOTED.



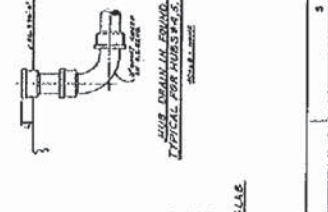
DETAIL A



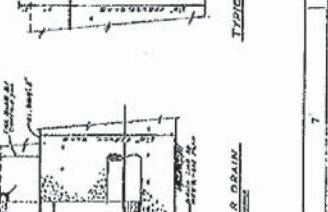
DETAIL B



DETAIL C



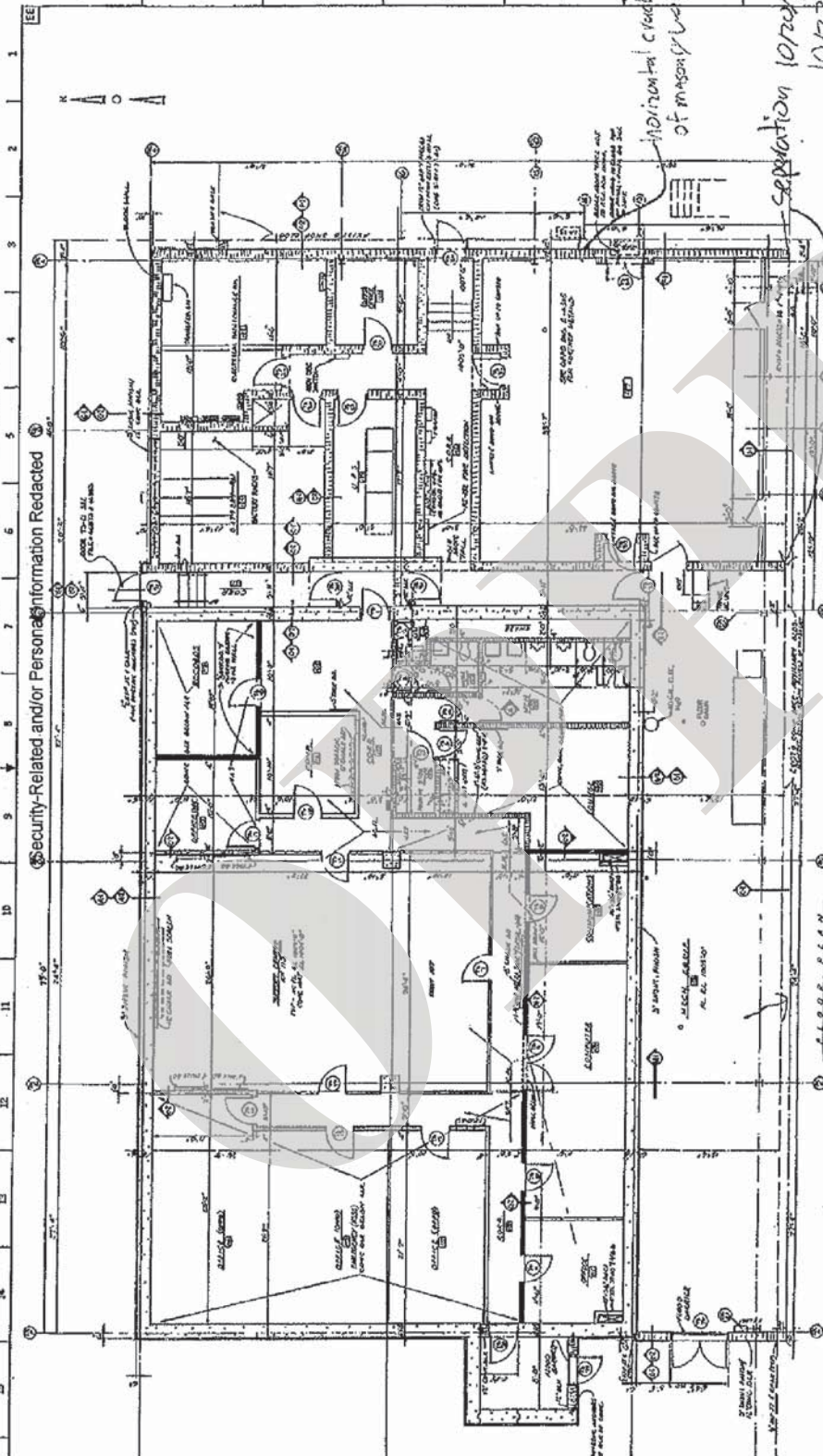
DETAIL D



DETAIL E



DETAIL F



ROOM SCHEDULE		DOOR SCHEDULE	
ROOM NO.	DESCRIPTION	NO.	DESCRIPTION
101	RECEPTION	101	RECEPTION
102	OFFICE	102	OFFICE
103	CONFERENCE	103	CONFERENCE
104	TRAINING	104	TRAINING
105	RESTROOM	105	RESTROOM
106	STORAGE	106	STORAGE
107	MEETING	107	MEETING
108	OFFICE	108	OFFICE
109	OFFICE	109	OFFICE
110	OFFICE	110	OFFICE
111	OFFICE	111	OFFICE
112	OFFICE	112	OFFICE
113	OFFICE	113	OFFICE
114	OFFICE	114	OFFICE
115	OFFICE	115	OFFICE
116	OFFICE	116	OFFICE
117	OFFICE	117	OFFICE
118	OFFICE	118	OFFICE
119	OFFICE	119	OFFICE
120	OFFICE	120	OFFICE
121	OFFICE	121	OFFICE
122	OFFICE	122	OFFICE
123	OFFICE	123	OFFICE
124	OFFICE	124	OFFICE
125	OFFICE	125	OFFICE
126	OFFICE	126	OFFICE
127	OFFICE	127	OFFICE
128	OFFICE	128	OFFICE
129	OFFICE	129	OFFICE
130	OFFICE	130	OFFICE
131	OFFICE	131	OFFICE
132	OFFICE	132	OFFICE
133	OFFICE	133	OFFICE
134	OFFICE	134	OFFICE
135	OFFICE	135	OFFICE
136	OFFICE	136	OFFICE
137	OFFICE	137	OFFICE
138	OFFICE	138	OFFICE
139	OFFICE	139	OFFICE
140	OFFICE	140	OFFICE
141	OFFICE	141	OFFICE
142	OFFICE	142	OFFICE
143	OFFICE	143	OFFICE
144	OFFICE	144	OFFICE
145	OFFICE	145	OFFICE
146	OFFICE	146	OFFICE
147	OFFICE	147	OFFICE
148	OFFICE	148	OFFICE
149	OFFICE	149	OFFICE
150	OFFICE	150	OFFICE
151	OFFICE	151	OFFICE
152	OFFICE	152	OFFICE
153	OFFICE	153	OFFICE
154	OFFICE	154	OFFICE
155	OFFICE	155	OFFICE
156	OFFICE	156	OFFICE
157	OFFICE	157	OFFICE
158	OFFICE	158	OFFICE
159	OFFICE	159	OFFICE
160	OFFICE	160	OFFICE
161	OFFICE	161	OFFICE
162	OFFICE	162	OFFICE
163	OFFICE	163	OFFICE
164	OFFICE	164	OFFICE
165	OFFICE	165	OFFICE
166	OFFICE	166	OFFICE
167	OFFICE	167	OFFICE
168	OFFICE	168	OFFICE
169	OFFICE	169	OFFICE
170	OFFICE	170	OFFICE
171	OFFICE	171	OFFICE
172	OFFICE	172	OFFICE
173	OFFICE	173	OFFICE
174	OFFICE	174	OFFICE
175	OFFICE	175	OFFICE
176	OFFICE	176	OFFICE
177	OFFICE	177	OFFICE
178	OFFICE	178	OFFICE
179	OFFICE	179	OFFICE
180	OFFICE	180	OFFICE
181	OFFICE	181	OFFICE
182	OFFICE	182	OFFICE
183	OFFICE	183	OFFICE
184	OFFICE	184	OFFICE
185	OFFICE	185	OFFICE
186	OFFICE	186	OFFICE
187	OFFICE	187	OFFICE
188	OFFICE	188	OFFICE
189	OFFICE	189	OFFICE
190	OFFICE	190	OFFICE
191	OFFICE	191	OFFICE
192	OFFICE	192	OFFICE
193	OFFICE	193	OFFICE
194	OFFICE	194	OFFICE
195	OFFICE	195	OFFICE
196	OFFICE	196	OFFICE
197	OFFICE	197	OFFICE
198	OFFICE	198	OFFICE
199	OFFICE	199	OFFICE
200	OFFICE	200	OFFICE

OPPD

**OPPD – FORT CALHOUN STATION
2011 FLOOD ASSESSMENT – KEY DISTRESS INDICATOR AND TECHNICAL SUPPORT CENTER
CONTINUED MONITORING**

USER NOTES / INSTRUCTIONS

1. The purpose of this document is to observe changes in the Key Distress Indicators and Technical Support Center previously identified during the Priority 1 Field Assessments at the Fort Calhoun Nuclear Power Plant.
2. This inspection is not a condition survey of the entire facility but of the Key Distress Indicators and Technical Support Center only.
3. Inspection of each Key Distress Indicators and Technical Support Center shall include a review of previous reports to verify if changes have occurred since the last inspection.
4. Where new items of distress are observed, note the specific location and nature of the distress. Use the additional sheet as necessary to document the item. Document each area of distress with photos.

OPPD – FORT CALHOUN STATION
 2011 FLOOD ASSESSMENT – KEY DISTRESS INDICATOR AND TECHNICAL SUPPORT CENTER
 CONTINUED MONITORING

Date 10/20/2011	Weather 38° F & Sunny	Inspection Team Members	Bryan Kumm
			Cameron Collingsworth
			Hugh O'Grady
Current River Elevation		994 ft.	

Key Distress Indicator #1 – Turbine Building Sump	
Indicator Inspected?	Yes <input checked="" type="checkbox"/> No <input type="checkbox"/>
New Degradation Observed?	Yes <input type="checkbox"/> No <input checked="" type="checkbox"/>
Notes: Groundwater continues to flow into the sump. The quantity of flow appears to be less than at the peak of the flood.	

Key Distress Indicator #2 – Paved Access Area	
Indicator Inspected?	Yes <input checked="" type="checkbox"/> No <input type="checkbox"/>
New Degradation Observed?	Yes <input type="checkbox"/> No <input checked="" type="checkbox"/>
Notes: Steel plates have been placed over many of the previously identified areas of distress. Fire Cabinet FP-3C has been removed. Surface water is perched in void below concrete east-southeast of MH-5.	

Key Distress Indicator #3 – Maintenance Shop Column	
Indicator Inspected?	Yes <input checked="" type="checkbox"/> No <input type="checkbox"/>
New Degradation Observed?	Yes <input type="checkbox"/> No <input checked="" type="checkbox"/>
Notes: Maintenance Shop Column TE15 displacement between top of column and beam is about 2-1/8 inches.	

**OPPD – FORT CALHOUN STATION
2011 FLOOD ASSESSMENT – KEY DISTRESS INDICATOR AND TECHNICAL SUPPORT CENTER
CONTINUED MONITORING**

Technical Support Center	
Structure Inspected?	Yes <input checked="" type="checkbox"/> No <input type="checkbox"/>
New Degradation Observed?	Yes <input type="checkbox"/> No <input checked="" type="checkbox"/>
Notes: A horizontal crack is located on the east wall of Room 127. Some separation of the expansion joint along the Auxiliary Building.	

Additional Information


**OPPD – FORT CALHOUN STATION
2011 FLOOD ASSESSMENT – KEY DISTRESS INDICATOR AND TECHNICAL SUPPORT CENTER
CONTINUED MONITORING**

USER NOTES / INSTRUCTIONS

1. The purpose of this document is to observe changes in the Key Distress Indicators and Technical Support Center previously identified during the Priority 1 Field Assessments at the Fort Calhoun Nuclear Power Plant.
2. This inspection is not a condition survey of the entire facility but of the Key Distress Indicators and Technical Support Center only.
3. Inspection of each Key Distress Indicators and Technical Support Center shall include a review of previous reports to verify if changes have occurred since the last inspection.
4. Where new items of distress are observed, note the specific location and nature of the distress. Use the additional sheet as necessary to document the item. Document each area of distress with photos.

**OPPD – FORT CALHOUN STATION
2011 FLOOD ASSESSMENT – KEY DISTRESS INDICATOR AND TECHNICAL SUPPORT CENTER
CONTINUED MONITORING**

Date 10/27/2011	Weather 40° F & Sunny	Inspection Team Members	Bryan Kumm
			Cameron Collingsworth
			Hugh O'Grady
Current River Elevation		994 ft.	

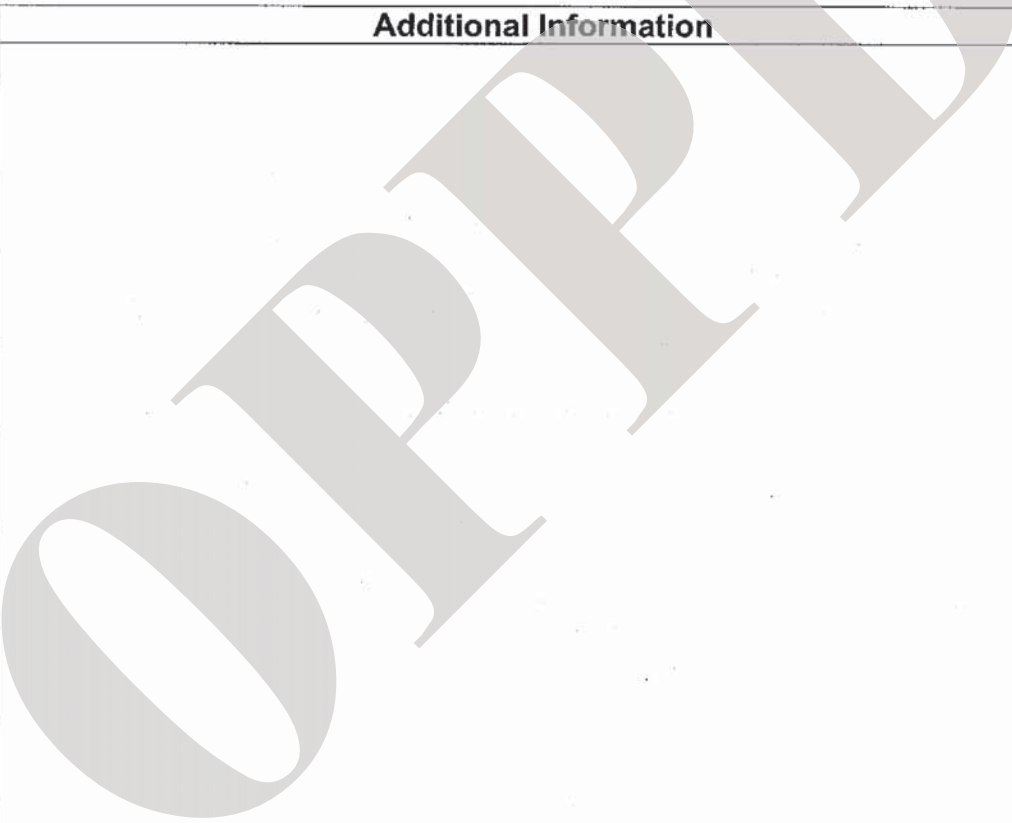
Key Distress Indicator #1 – Turbine Building Sump	
Indicator Inspected?	Yes <input checked="" type="checkbox"/> No <input type="checkbox"/>
New Degradation Observed?	Yes <input type="checkbox"/> No <input checked="" type="checkbox"/>
Notes: No observable differences from previous visit.	

Key Distress Indicator #2 – Paved Access Area	
Indicator Inspected?	Yes <input checked="" type="checkbox"/> No <input type="checkbox"/>
New Degradation Observed?	Yes <input checked="" type="checkbox"/> No <input type="checkbox"/>
Notes: The new degradation consisted of the southeast corner of the concrete panel at High Mast Light 403 appears to have sunk about ¼ to ½ inches.	
Fire Cabinet FP-3C has been replaced. New concrete has not been placed. Ground surface is surfaced in crushed limestone.	
No other observable differences from previous visit.	

Key Distress Indicator #3 – Maintenance Shop Column	
Indicator Inspected?	Yes <input checked="" type="checkbox"/> No <input type="checkbox"/>
New Degradation Observed?	Yes <input type="checkbox"/> No <input checked="" type="checkbox"/>
Notes: No observable difference from previous visit.	

**OPPD - FORT CALHOUN STATION
2011 FLOOD ASSESSMENT - KEY DISTRESS INDICATOR AND TECHNICAL SUPPORT CENTER
CONTINUED MONITORING**

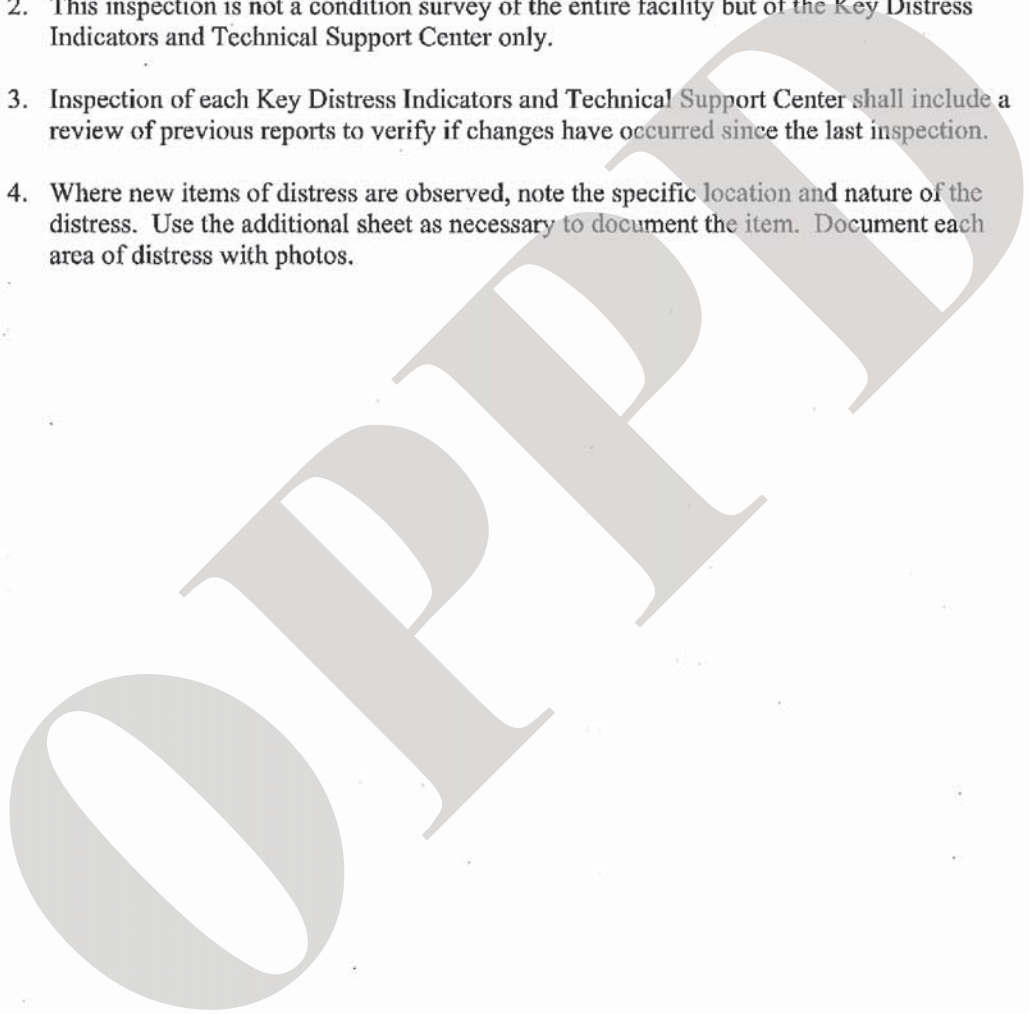
Technical Support Center	
Structure Inspected?	Yes <input checked="" type="checkbox"/> No <input type="checkbox"/>
New Degradation Observed?	Yes <input type="checkbox"/> No <input checked="" type="checkbox"/>
Notes: No observable difference from previous visit.	

Additional Information


**OPPD – FORT CALHOUN STATION
2011 FLOOD ASSESSMENT – KEY DISTRESS INDICATOR AND TECHNICAL SUPPORT CENTER
CONTINUED MONITORING**

USER NOTES / INSTRUCTIONS

1. The purpose of this document is to observe changes in the Key Distress Indicators and Technical Support Center previously identified during the Priority 1 Field Assessments at the Fort Calhoun Nuclear Power Plant.
2. This inspection is not a condition survey of the entire facility but of the Key Distress Indicators and Technical Support Center only.
3. Inspection of each Key Distress Indicators and Technical Support Center shall include a review of previous reports to verify if changes have occurred since the last inspection.
4. Where new items of distress are observed, note the specific location and nature of the distress. Use the additional sheet as necessary to document the item. Document each area of distress with photos.



OPPD – FORT CALHOUN STATION
 2011 FLOOD ASSESSMENT – KEY DISTRESS INDICATOR AND TECHNICAL SUPPORT CENTER
 CONTINUED MONITORING

Date 11/3/2011	Weather 50° F & Sunny	Inspection Team Members	John Christiansen
			John Smith
Current River Elevation			993.3 ft.

Key Distress Indicator #1 – Turbine Building Sump	
Indicator Inspected?	Yes <input checked="" type="checkbox"/> No <input type="checkbox"/>
New Degradation Observed?	Yes <input type="checkbox"/> No <input checked="" type="checkbox"/>
Notes: No observable differences from previous visit.	

Key Distress Indicator #2 – Paved Access Area	
Indicator Inspected?	Yes <input checked="" type="checkbox"/> No <input type="checkbox"/>
New Degradation Observed?	Yes <input type="checkbox"/> No <input checked="" type="checkbox"/>
Notes: The new concrete for Fire Cabinet FP-3C had been installed.	
A 10' x 6' x 3'H pile of soil and sediment was removed from the cable trench near the northeast corner of vehicle gate number one.	
A steel plate was installed over the gravel surfacing west of transformer T1A4.	
Landscaping rock and fabric were removed east of the Service Building, south of FP-145.	
No other observable differences from previous visit.	

Key Distress Indicator #3 – Maintenance Shop Column	
Indicator Inspected?	Yes <input checked="" type="checkbox"/> No <input type="checkbox"/>
New Degradation Observed?	Yes <input checked="" type="checkbox"/> No <input type="checkbox"/>

**OPPD – FORT CALHOUN STATION
2011 FLOOD ASSESSMENT – KEY DISTRESS INDICATOR AND TECHNICAL SUPPORT CENTER
CONTINUED MONITORING**

Notes: The measured displacement of Column TE15 in the Maintenance shop increased to 2-5/16".

No other observable differences from previous visit.

Technical Support Center

Structure Inspected? Yes No

New Degradation Observed? Yes No

Notes: A stair-stepped crack in the masonry wall in Office #128 (Janitor Closet – south wall) was observed.

No other observable differences from previous visit.

Additional Information

**OPPD - FORT CALHOUN STATION
2011 FLOOD ASSESSMENT - KEY DISTRESS INDICATOR AND TECHNICAL SUPPORT CENTER
CONTINUED MONITORING**



**OPPD – FORT CALHOUN STATION
2011 FLOOD ASSESSMENT – KEY DISTRESS INDICATOR AND TECHNICAL SUPPORT CENTER
CONTINUED MONITORING**

USER NOTES / INSTRUCTIONS

1. The purpose of this document is to observe changes in the Key Distress Indicators and Technical Support Center previously identified during the Priority 1 Field Assessments at the Fort Calhoun Nuclear Power Plant.
2. This inspection is not a condition survey of the entire facility but of the Key Distress Indicators and Technical Support Center only.
3. Inspection of each Key Distress Indicators and Technical Support Center shall include a review of previous reports to verify if changes have occurred since the last inspection.
4. Where new items of distress are observed, note the specific location and nature of the distress. Use the additional sheet as necessary to document the item. Document each area of distress with photos.

**OPPD – FORT CALHOUN STATION
2011 FLOOD ASSESSMENT – KEY DISTRESS INDICATOR AND TECHNICAL SUPPORT CENTER
CONTINUED MONITORING**

Date 11/09/2011	Weather 35° F, Sunny, & Windy	Inspection Team Members	Bryan Kumm
			Cameron Collingsworth
			Hugh O'Grady
Current River Elevation			993 ft.

Key Distress Indicator #1 – Turbine Building Sump	
Indicator Inspected?	Yes <input checked="" type="checkbox"/> No <input type="checkbox"/>
New Degradation Observed?	Yes <input type="checkbox"/> No <input checked="" type="checkbox"/>
Notes: No observable differences from previous visit.	

Key Distress Indicator #2 – Paved Access Area	
Indicator Inspected?	Yes <input checked="" type="checkbox"/> No <input type="checkbox"/>
New Degradation Observed?	Yes <input checked="" type="checkbox"/> No <input type="checkbox"/>
Notes: The new degradation consisted of a crack that appeared on the southeast corner of the concrete panel at High Mast Light 403.	
Concrete had been placed around Fire Cabinet FP-3C. The steel plates had been removed and the exposed concrete appeared to be more severely damaged than prior to the placement of the steel plates.	
No other observable differences from previous visit..	

Key Distress Indicator #3 – Maintenance Shop Column	
Indicator Inspected?	Yes <input checked="" type="checkbox"/> No <input type="checkbox"/>
New Degradation Observed?	Yes <input type="checkbox"/> No <input checked="" type="checkbox"/>
Notes: No observable difference from previous visit.	

**OPPD – FORT CALHOUN STATION
2011 FLOOD ASSESSMENT – KEY DISTRESS INDICATOR AND TECHNICAL SUPPORT CENTER
CONTINUED MONITORING**

Technical Support Center	
Structure Inspected?	Yes <input checked="" type="checkbox"/> No <input type="checkbox"/>
New Degradation Observed?	Yes <input type="checkbox"/> No <input checked="" type="checkbox"/>
Notes: No observable difference from previous visit.	

Additional Information


**OPPD – FORT CALHOUN STATION
2011 FLOOD ASSESSMENT – KEY DISTRESS INDICATOR, TECHNICAL SUPPORT CENTER,
AND TURBINE BUILDING SOUTH SWITCHYARD CMU WALL CONTINUED MONITORING**

USER NOTES / INSTRUCTIONS

1. The purpose of this document is to observe changes in the Key Distress Indicators, Technical Support Center, Turbine Building South Switchyard CMU wall previously identified during the Priority 1 Field Assessments at the Fort Calhoun Nuclear Power Plant.
2. This inspection is not a condition survey of the entire facility but of the Key Distress Indicators, Technical Support Center, and Turbine Building South Switchyard CMU wall only.
3. Inspection of each Key Distress Indicators, Technical Support Center, and Turbine Building South Switchyard CMU wall shall include a review of previous reports to verify if changes have occurred since the last inspection.
4. Where new items of distress are observed, note the specific location and nature of the distress. Use the additional sheet as necessary to document the item. Document each area of distress with photos.

OPPD – FORT CALHOUN STATION
2011 FLOOD ASSESSMENT – KEY DISTRESS INDICATOR, TECHNICAL SUPPORT CENTER,
AND TURBINE BUILDING SOUTH SWITCHYARD CMU WALL CONTINUED MONITORING

Date 11/22/2011	Weather 38° F, Partly Cloudy	Inspection Team Members	Bryan Kumm
			Hugh O'Grady
Current River Elevation		993 ft.	

Key Distress Indicator #1 – Turbine Building Sump	
Indicator Inspected?	Yes <input checked="" type="checkbox"/> No <input type="checkbox"/>
New Degradation Observed?	Yes <input type="checkbox"/> No <input checked="" type="checkbox"/>
Notes: No observable differences from previous visit.	

Key Distress Indicator #2 – Paved Access Area	
Indicator Inspected?	Yes <input checked="" type="checkbox"/> No <input type="checkbox"/>
New Degradation Observed?	Yes <input checked="" type="checkbox"/> No <input type="checkbox"/>
Notes: The new degradation consisted the concrete panel at High Mast Light 403, subsiding about ¼-inch..	
No other observable differences from previous visit..	

Key Distress Indicator #3 – Maintenance Shop Column	
Indicator Inspected?	Yes <input checked="" type="checkbox"/> No <input type="checkbox"/>
New Degradation Observed?	Yes <input type="checkbox"/> No <input checked="" type="checkbox"/>
Notes: No observable difference from previous visit.	

**OPPD – FORT CALHOUN STATION
2011 FLOOD ASSESSMENT – KEY DISTRESS INDICATOR, TECHNICAL SUPPORT CENTER,
AND TURBINE BUILDING SOUTH SWITCHYARD CMU WALL CONTINUED MONITORING**

USER NOTES / INSTRUCTIONS

1. The purpose of this document is to observe changes in the Key Distress Indicators, Technical Support Center, Turbine Building South Switchyard CMU wall previously identified during the Priority 1 Field Assessments at the Fort Calhoun Nuclear Power Plant.
2. This inspection is not a condition survey of the entire facility but of the Key Distress Indicators, Technical Support Center, and Turbine Building South Switchyard CMU wall only.
3. Inspection of each Key Distress Indicators, Technical Support Center, and Turbine Building South Switchyard CMU wall shall include a review of previous reports to verify if changes have occurred since the last inspection.
4. Where new items of distress are observed, note the specific location and nature of the distress. Use the additional sheet as necessary to document the item. Document each area of distress with photos.

OPPD – FORT CALHOUN STATION
2011 FLOOD ASSESSMENT – KEY DISTRESS INDICATOR, TECHNICAL SUPPORT CENTER,
AND TURBINE BUILDING SOUTH SWITCHYARD CMU WALL CONTINUED MONITORING

Date 12/08/2011	Weather 30° F, Cloudy	Inspection Team Members	Bryan Kumm
			Cameron Collingsworth
Current River Elevation		992.5 ft.	

Key Distress Indicator #1 – Turbine Building Sump	
Indicator Inspected?	Yes <input checked="" type="checkbox"/> No <input type="checkbox"/>
New Degradation Observed?	Yes <input type="checkbox"/> No <input checked="" type="checkbox"/>
Notes: No observable differences from previous visit.	

Key Distress Indicator #2 – Paved Access Area	
Indicator Inspected?	Yes <input checked="" type="checkbox"/> No <input type="checkbox"/>
New Degradation Observed?	Yes <input type="checkbox"/> No <input checked="" type="checkbox"/>
Notes: Concrete pavement east-southeast of MH-5 was replaced. The concrete panel next to High Mast Light 403 could not be observed because it was covered in ice.	
No other observable differences from previous visit.	

Key Distress Indicator #3 – Maintenance Shop Column	
Indicator Inspected?	Yes <input checked="" type="checkbox"/> No <input type="checkbox"/>
New Degradation Observed?	Yes <input type="checkbox"/> No <input checked="" type="checkbox"/>
Notes: OPPD adjusted the shoring supporting the beam on Column Line 15. After adjusting the shoring, Maintenance Shop Column MG-15 displacement between top of column and beam was about 2½ inches.	

**OPPD – FORT CALHOUN STATION
 2011 FLOOD ASSESSMENT – KEY DISTRESS INDICATOR, TECHNICAL SUPPORT CENTER,
 AND TURBINE BUILDING SOUTH SWITCHYARD CMU WALL CONTINUED MONITORING**

Technical Support Center	
Structure Inspected?	Yes <input checked="" type="checkbox"/> No <input type="checkbox"/>
New Degradation Observed?	Yes <input type="checkbox"/> No <input checked="" type="checkbox"/>
<p>Notes: Three crack monitors had been installed on the horizontal crack in the Technical Support Center. The furthest south monitor indicated less than 1/16 of an inch horizontal deflection. The other two monitors indicated no deflection.</p>	

Turbine Building South Switchyard CMU Wall	
Structure Inspected?	Yes <input checked="" type="checkbox"/> No <input type="checkbox"/>
New Degradation Observed?	Yes <input checked="" type="checkbox"/> No <input type="checkbox"/>
<p>Notes: No observable differences from previous visit.</p>	

Additional Information
<p><i>(This area is currently blank, overlaid with a large watermark reading 'OPPD')</i></p>

This Page Intentionally Left Blank

OPPD