

Nuclide Analysis Results of Fish and Shellfish  
(The Ocean Area Within 20km Radius of Fukushima Daiichi NPS) < 1/4 >

(Data summarized on June 8)

Name of Sample (Region)	Place of Sampling (Place No.)	Date of Sampling	Radioactivity Density[Bq/kg (Raw)] (Half-life)		
			Cs-134 (Approx. 2 years)	Cs-137 (Approx. 30 years)	Total
Greenling (Muscle)	Around 10km Offshore of Fukushima Daini NPS (T-B4)	May 21, 2012	50	65	115
Lepidotrigla microptera (Muscle)	Around 10km Offshore of Fukushima Daini NPS (T-B4)	May 21, 2012	12	14	26
Lophius litilon (Whole)	Around 10km Offshore of Fukushima Daini NPS (T-B4)	May 21, 2012	9.5	17	26.5
Common Skete (Muscle)	Around 10km Offshore of Fukushima Daini NPS (T-B4)	May 21, 2012	130	190	320
Loliginid (Whole)	Around 10km Offshore of Fukushima Daini NPS (T-B4)	May 21, 2012	ND	ND	ND
Sea bass (Muscle)	Around 10km Offshore of Fukushima Daini NPS (T-B4)	May 21, 2012	20	32	52
Microstomus achne (Muscle)	Around 10km Offshore of Fukushima Daini NPS (T-B4)	May 21, 2012	32	47	79
Littlemouth flounder (Muscle)	Around 10km Offshore of Fukushima Daini NPS (T-B4)	May 21, 2012	24	43	67
Marbled sole (Muscle)	Around 10km Offshore of Fukushima Daini NPS (T-B4)	May 21, 2012	48	62	110
Pacific cod (Muscle)	Around 10km Offshore of Fukushima Daini NPS (T-B4)	May 21, 2012	22	30	52

\* When the measurement value is below the detection limit, "ND" is marked. The detection limits are as follows.

Cs-134: Approx. 3.9Bq/kg (Raw), Cs-137: Approx. 4.2Bq/kg (Raw).

As the detection limit may vary depending on the detectors and sample properties, there are cases where nuclides below the detection limit are detected.

\* Standard Value (after April 1, 2012) Cs-134+Cs-137: 100Bq/kg

\* Analyzed by Tokyo Electric Power Environmental Engineering Co., Inc.

Nuclide Analysis Results of Fish and Shellfish  
(The Ocean Area Within 20km Radius of Fukushima Daiichi NPS) < 2/4 >

(Data summarized on June 8)

Name of Sample (Region)	Place of Sampling (Place No.)	Date of Sampling	Radioactivity Density[Bq/kg (Raw)] (Half-life)		
			Cs-134 (Approx. 2 years)	Cs-137 (Approx. 30 years)	Total
Octopus (Enteroctopus) dofleini (Muscle)	Around 10km Offshore of Fukushima Daini NPS (T-B4)	May 21, 2012	ND	ND	ND
Roundnose flounder (Muscle)	Around 10km Offshore of Fukushima Daini NPS (T-B4)	May 21, 2012	25	32	57
Greenling (Muscle)	Around 3km offshore of Odaka Ward (T-S3)	May 25, 2012	360	550	910
Schlegel's black rockfish (Muscle)	Around 3km offshore of Odaka Ward (T-S3)	May 25, 2012	170	240	410
Common Skete (Muscle)	Around 3km offshore of Odaka Ward (T-S3)	May 25, 2012	210	320	530
Pennahia argentata (Muscle)	Around 3km offshore of Odaka Ward (T-S3)	May 25, 2012	53	68	121
Microstomus achne (Muscle)	Around 3km offshore of Odaka Ward (T-S3)	May 25, 2012	180	240	420
Flatfish (Muscle)	Around 3km offshore of Odaka Ward (T-S3)	May 25, 2012	73	100	173
Dasyatis matsubarai (Muscle)	Around 3km offshore of Odaka Ward (T-S3)	May 25, 2012	85	120	205
Barfin flounder (Muscle)	Around 3km offshore of Odaka Ward (T-S3)	May 25, 2012	280	410	690

\* When the measurement value is below the detection limit, "ND" is marked. The detection limits are as follows.

Cs-134: Approx. 3.7Bq/kg (Raw), Cs-137: Approx. 4.7Bq/kg (Raw).

As the detection limit may vary depending on the detectors and sample properties, there are cases where nuclides below the detection limit are detected.

\* Standard Value (after April 1, 2012) Cs-134+Cs-137: 100Bq/kg

\* Analyzed by Tokyo Electric Power Environmental Engineering Co., Inc.

Nuclide Analysis Results of Fish and Shellfish  
(The Ocean Area Within 20km Radius of Fukushima Daiichi NPS) < 3/4 >

(Data summarized on June 8)

Name of Sample (Region)	Place of Sampling (Place No.)	Date of Sampling	Radioactivity Density[Bq/kg (Raw)] (Half-life)		
			Cs-134 (Approx. 2 years)	Cs-137 (Approx. 30 years)	Total
Marbled sole (Muscle)	Around 3km offshore of Odaka Ward (T-S3)	May 25, 2012	100	150	250
Greenling (Muscle)	Around 3km Offshore of Fukushima Daiichi NPS (T-S4)	May 25, 2012	200	280	480
Northern dogfish (Muscle)	Around 3km Offshore of Fukushima Daiichi NPS (T-S4)	May 25, 2012	ND	ND	ND
Lophius litilon (Whole)	Around 3km Offshore of Fukushima Daiichi NPS (T-S4)	May 25, 2012	5.4	11	16.4
Sea raven (Muscle)	Around 3km Offshore of Fukushima Daiichi NPS (T-S4)	May 25, 2012	270	400	670
Common Skete (Muscle)	Around 3km Offshore of Fukushima Daiichi NPS (T-S4)	May 25, 2012	360	480	840
Pennahia argentata (Muscle)	Around 3km Offshore of Fukushima Daiichi NPS (T-S4)	May 25, 2012	30	39	69
Sebastes cheni (Muscle)	Around 3km Offshore of Fukushima Daiichi NPS (T-S4)	May 25, 2012	620	970	1590
Sea bass (Muscle)	Around 3km Offshore of Fukushima Daiichi NPS (T-S4)	May 25, 2012	21	33	54
Microstomus achne (Muscle)	Around 3km Offshore of Fukushima Daiichi NPS (T-S4)	May 25, 2012	210	330	540

\* When the measurement value is below the detection limit, "ND" is marked. The detection limits are as follows.

Cs-134: Approx. 3.6Bq/kg (Raw), Cs-137: Approx. 4.2Bq/kg (Raw).

As the detection limit may vary depending on the detectors and sample properties, there are cases where nuclides below the detection limit are detected.

\* Standard Value (after April 1, 2012) Cs-134+Cs-137: 100Bq/kg

\* Analyzed by Tokyo Electric Power Environmental Engineering Co., Inc.

Nuclide Analysis Results of Fish and Shellfish  
(The Ocean Area Within 20km Radius of Fukushima Daiichi NPS) < 4/4 >

(Data summarized on June 8)

Name of Sample (Region)	Place of Sampling (Place No.)	Date of Sampling	Radioactivity Density[Bq/kg (Raw)] (Half-life)		
			Cs-134 (Approx. 2 years)	Cs-137 (Approx. 30 years)	Total
Ovalipes punctatus (Whole)	Around 3km Offshore of Fukushima Daiichi NPS (T-S4)	May 25, 2012	6.5	8.6	15.1
Flatfish (Muscle)	Around 3km Offshore of Fukushima Daiichi NPS (T-S4)	May 25, 2012	63	86	149
Sea robin (Muscle)	Around 3km Offshore of Fukushima Daiichi NPS (T-S4)	May 25, 2012	27	42	69
Marbled sole (Muscle)	Around 3km Offshore of Fukushima Daiichi NPS (T-S4)	May 25, 2012	83	130	213

\* Standard Value (after April 1, 2012) Cs-134+Cs-137: 100Bq/kg

\* Analyzed by Tokyo Electric Power Environmental Engineering Co., Inc.

# Sample Photos of Fish and Shellfish (May 21 and 25, 2012)

Sampling locations: Around 10km Offshore of 2F (T-B4), Around 3km Offshore of Ukedo River (T-S3), Around 3km Offshore of 1F (T-S4)

1. Greenling



2. Lepidotrigla microptera



3. Lophius litilon



4. Common Skete



5. Loliginid



6. Sea bass



7. Microstomus achne



8. Littlemouth flounder



9. Marbled sole



10. Pacific cod



11. Octopus (Enteroctopus dofleini)



12. Roundnose flounder



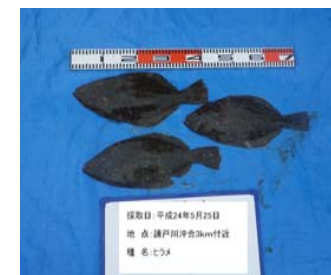
13. Schlegel's black rockfish



14. Pennahia argentata



15. Flatfish



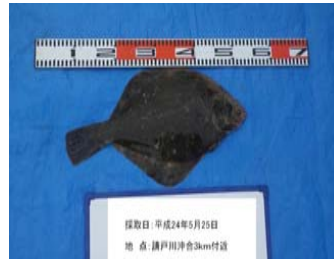
# Sample Photos of Fish and Shellfish (May 21 and 25, 2012)

Sampling locations: Around 10km Offshore of 2F (T-B4), Around 3km Offshore of Ukedo River (T-S3), Around 3km Offshore of 1F (T-S4)

16. *Dasyatis matsubarae*



17. Barfin flounder



18. Northern dogfish



19. Sea raven



20. *Sebastes cheni*



21. *Ovalipes punctatus*



22. Sea robin

