

Completion of the Steel Frame Construction for the Cover to be Installed for Fuel Removal at Unit 4 at Fukushima Daiichi Nuclear Power Station

The steel frame construction for the cover to be installed for fuel removal at Unit 4, which has been performed since January 8, 2013, was completed today (May 29).

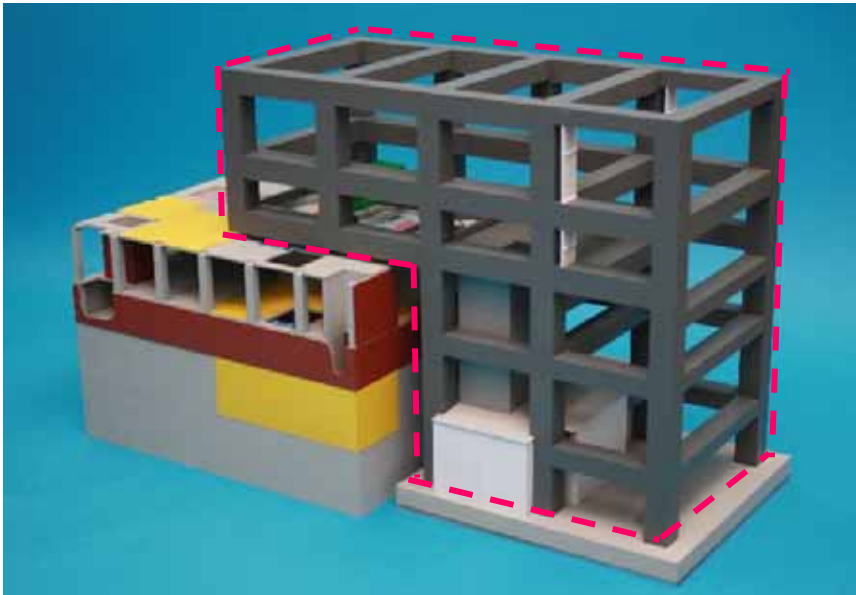
A work using ceiling crane will be started toward fuel removal soon after it is ready (scheduled in early June 2013).

<Steel Frame Construction>

Working date: January 8 – May 29, 2013

Materials used: 38 columns and 49 beams (Total: 87)

(Simulated image)



Completion of the steel frame construction for the cover to be installed for fuel removal (indicated by a pink dotted line)



The cover to be installed for fuel removal (as of May 29, 2013)

* The panels are being installed at the east, west and south side of the outer wall along with the steel frame construction.

Steel Frame Construction for the Cover to be Installed for Fuel Removal at Unit 4 [January 8 - May 29, 2013]



(1) Before the steel frame construction was started (December 18, 2012)



(2) Completion of the first layer of the steel framing (January 14, 2013)



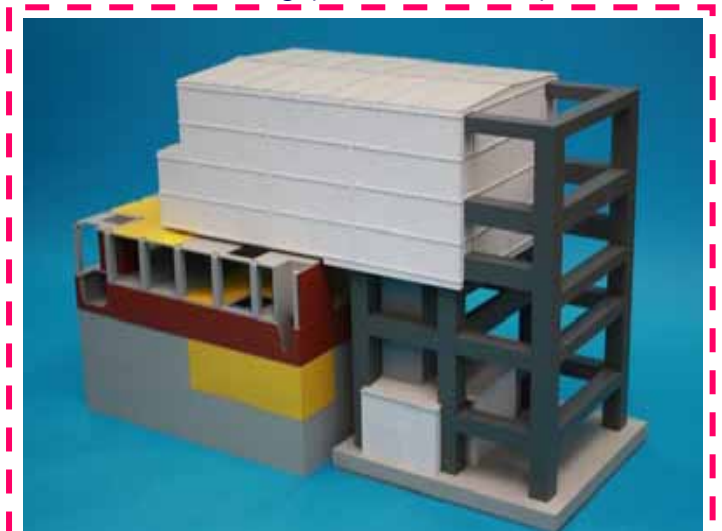
(3) Completion of the third layer of the steel framing (March 13, 2013)



(4) Completion of the steel frame construction excluding the upper part of the Reactor Building (April 10, 2013)



(5) Completion of the steel frame construction (May 29, 2013)



Simulated image of the cover to be installed for fuel removal

Photo taken by TEPCO

Preparation toward the installation of fuel handling machine and ceiling crane inside the cover will be ongoing.

End